

# Machine elements

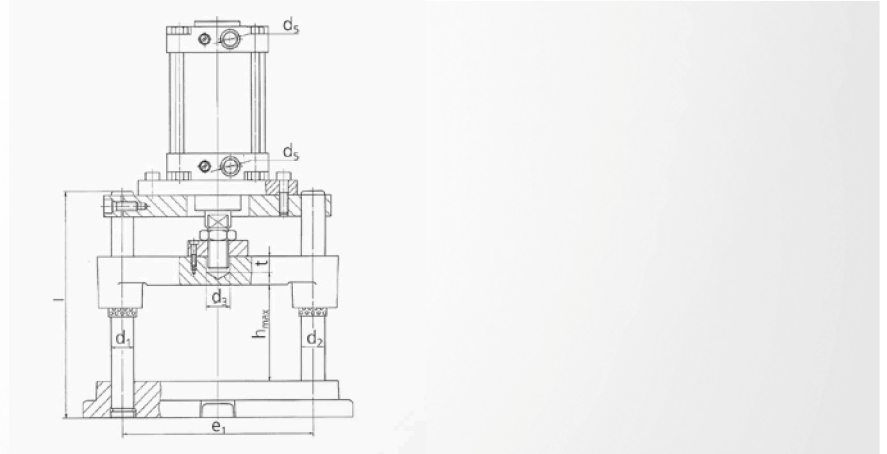
- Pneumatic stamping unit
- Toggle-lever presses





# ST1092 Pneumatic stamping unit

with round working surface



**Note**

Consisting of pneumatic cylinder, threaded flange, die set with ball guide, traverse

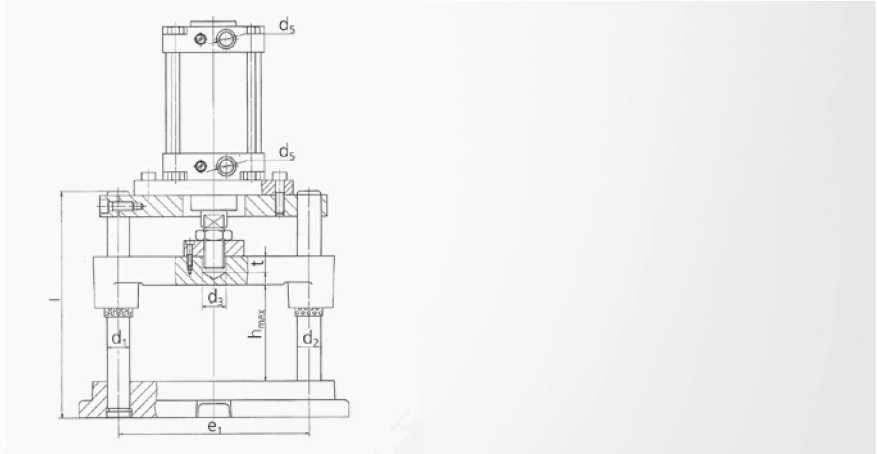
**Scope of supply**

ST1002; ST9062; ST9067; ST9041

$d_1 / d_2 \times l$	D	$d_3$	$d_5$	$e_1$	t	$\varnothing_{Cylinder}$	Compressive force F at 6 bar N	Stroke Cylinder	$h_{max}$	Item number
24 / 25 x 280	125	25	G 3/8"	184	15	80	3015	50	115	ST1092 <b>125</b>
30 / 32 x 315	160	25	G 1/2"	229	15	100	4712	50	130	ST1092 <b>160</b>
30 / 32 x 355	200	32	G 1/2"	269	20	125	7360	100	165	ST1092 <b>200</b>
38 / 40 x 400	250	42	G 3/4"	335	28	160	12060	100	170	ST1092 <b>250</b>

# ST1292 Pneumatic stamping unit

with rectangular working surface



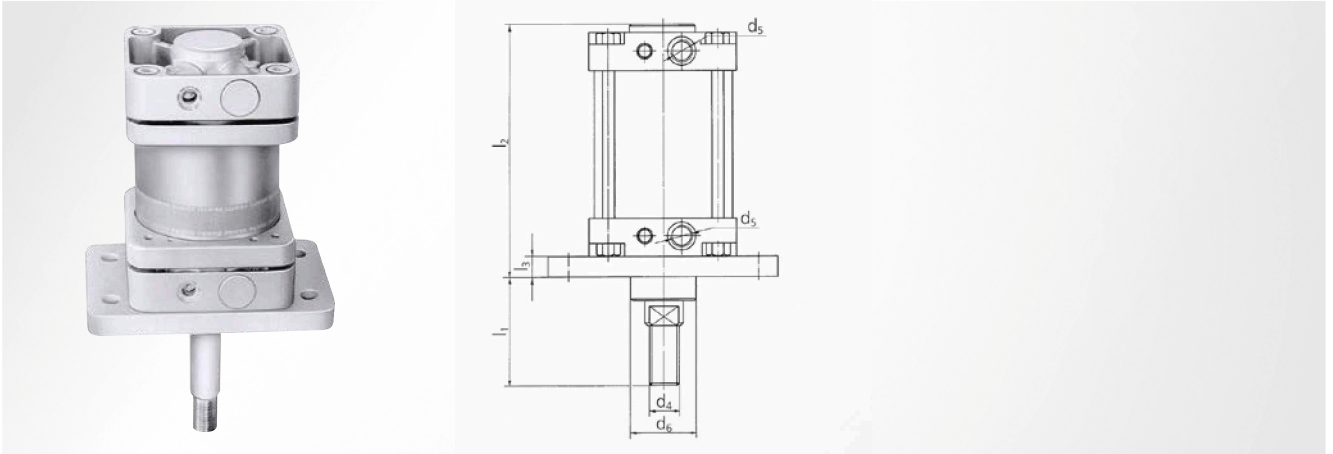
**Note**

Consisting of pneumatic cylinder, threaded flange, die set with ball guide, traverse

**Scope of supply**

ST1202; ST9062; ST9067; ST9041

$d_1 / d_2 \times l$	$a_1 \times b_1$	$d_3$	$d_5$	$e_1$	$l$	$t$	$\varnothing_{\text{Cylinder}}$	Compressive force F at 6 bar N	Stroke <sub>Cylinder</sub>	$h_{\text{max}}$	Item number
24 / 25 x 280	125 x 80	25	G 3/8"	184	280	15	80	3015	50	115	ST1292 <b>125 x 080</b>
24 / 25 x 280	125 x 100	25	G 3/8"	184	280	15	80	3015	50	115	ST1292 <b>125 x 100</b>
30 / 32 x 315	160 x 125	25	G 1/2"	229	315	15	100	4712	50	130	ST1292 <b>160 x 125</b>
30 / 32 x 355	200 x 100	32	G 1/2"	269	355	20	125	7360	100	165	ST1292 <b>200 x 100</b>
30 / 32 x 355	200 x 125	32	G 1/2"	269	355	20	125	7360	100	165	ST1292 <b>200 x 125</b>
30 / 32 x 355	200 x 160	32	G 1/2"	269	355	20	125	7360	100	165	ST1292 <b>200 x 160</b>
38 / 40 x 400	250 x 200	42	G 3/4"	335	400	28	160	12060	100	170	ST1292 <b>250 x 200</b>



## DIN ISO 6431

### Installation instruction

The next size is suitable for use without flange; screw on from underneath; if required, enlarge the length ( $l_1$ ) of the guide pillars appropriately

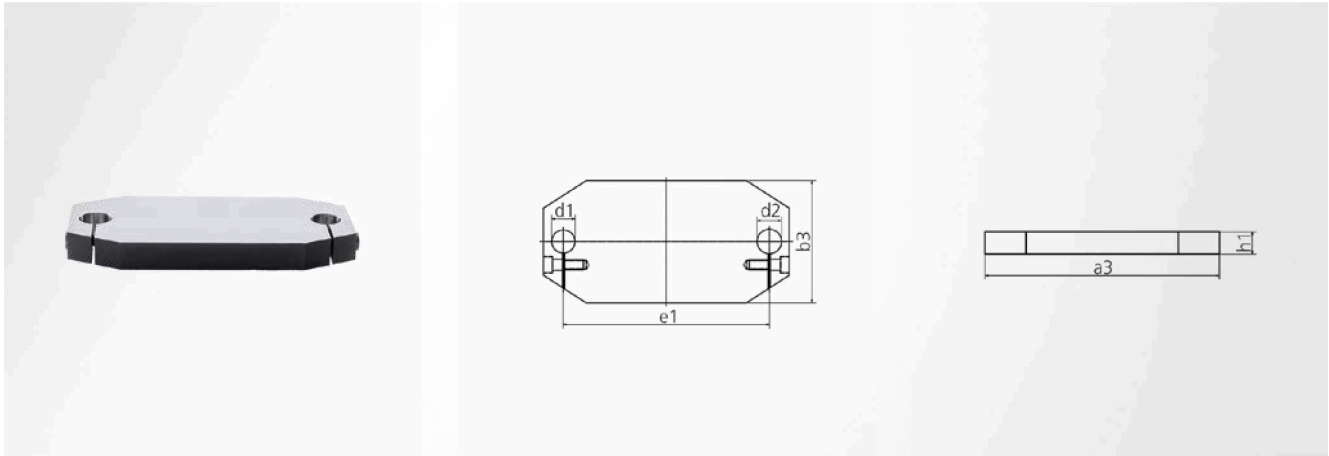
### Note

Hydro-supported pneumatic cylinders available upon request; diameter 200 has no flange

Compressive force N	D	Stroke	$d_4$	$d_5$	$d_6$	$l_1$	$l_2$	$l_3$	Item number
3015	80	50	M20 x 1.5	G3/8"	48	70	148	18	ST9041 <b>080 x 050</b>
4712	100	50	M20 x 1.5	G1/2"	52	75	159	18	ST9041 <b>100 x 050</b>
7360	125	100	M27 x 2	G1/2"	60	99	186	20	ST9041 <b>125 x 100</b>
12060	160	100	M36 x 2	G3/4"	80	132	205	25	ST9041 <b>160 x 100</b>
18840	200	100	M36 x 2	G3/4"	80	142	217	25	ST9041 <b>200 x 100</b>

# ST9061 Traverse

not bored



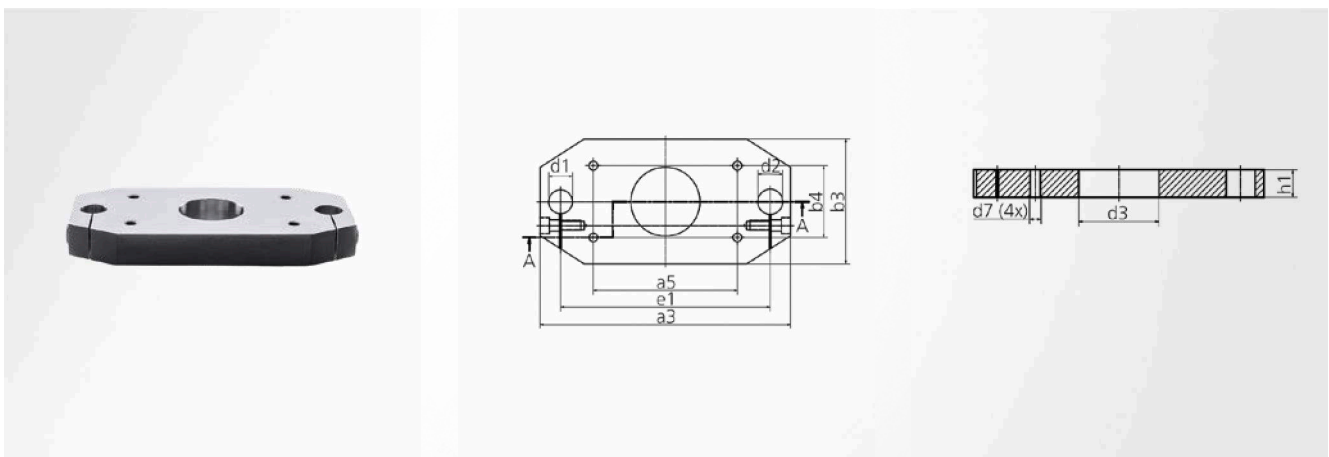
## Material

Grey cast irons EN-GJL-250

$a_3$	$b_3$	$d_1$	$d_2$	$e_1$	$h_1$	Item number
228	115	24	25	184	28	ST9061 <b>184</b>
280	135	30	32	229	28	ST9061 <b>229</b>
320	160	30	32	269	38	ST9061 <b>269</b>
400	200	38	40	335	38	ST9061 <b>335</b>

# ST9062 Traverse

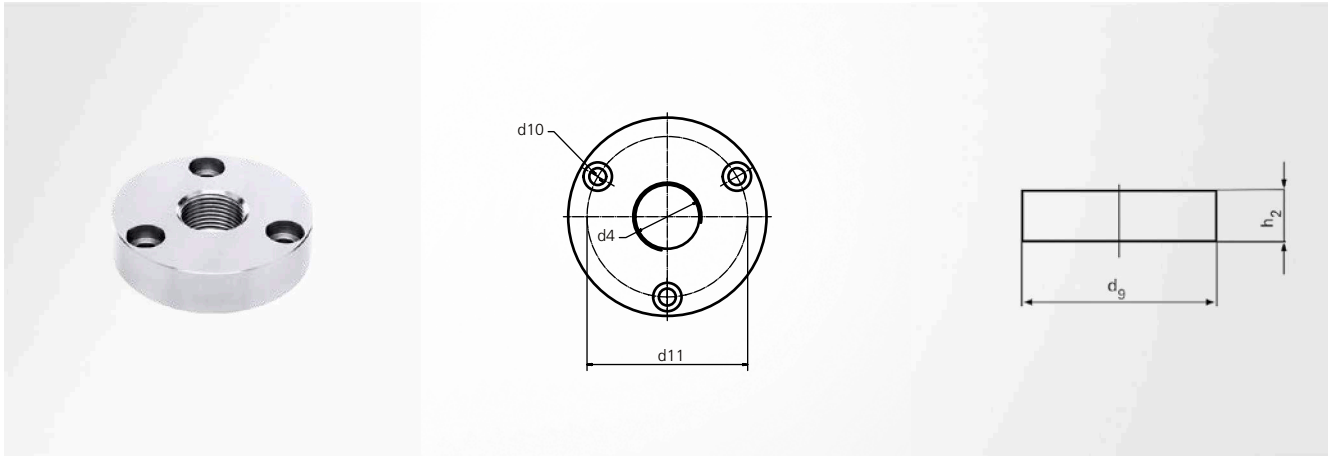
bored



## Material

Grey cast irons EN-GJL-250

$a_3$	$a_5$	$b_3$	$d_1$	$d_2$	$d_3$	$b_4$	$e_1$	$h_1$	$d_7$	Item number
228	126	115	24	25	52	63	184	28	M10	ST9062 <b>184</b>
280	150	135	30	32	56	75	229	28	M12	ST9062 <b>229</b>
320	180	160	30	32	74	90	269	38	M14	ST9062 <b>269</b>
400	230	200	38	40	110	115	335	38	M16	ST9062 <b>335</b>



$d_4$	$d_9$	$d_{10}$	$d_{11}$	$h_2$	Item number
M20 x 1.5	70	M6	56	16	ST9067 <b>20</b>
M27 x 2	80	M8	62	20	ST9067 <b>27</b>
M36 x 2	105	M8	85	28	ST9067 <b>36</b>

Stand 22. Oktober 2018 - zur Freigabe

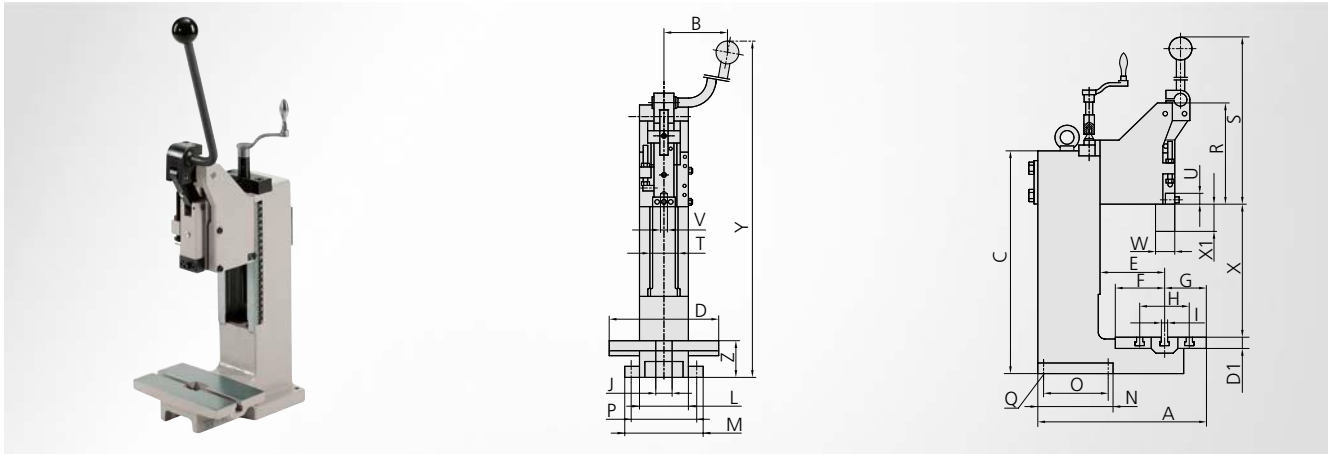
## ST9072 Mounting tabel for pneumatic stamping unit



**Size (W x H x D)**  
725 x 722.5 x 605 mm

**Item number**  
ST907201

**Note**  
Thickness of the work surface: 42.5 mm



The ST912x toggle-lever presses boast 360° adjustable hand levers, height adjustability, large ram strokes, work tables with T-slots for tool fixing, clearance boreholes in the middle of the tables and a compact and stable design, while taking up little space.

## Note

via a change of the bearing bolt, ST9124, ST9126 convertible to 12 kN or 16 kN at max. stroke 25 mm

Stand 22. Oktober 2018 - zur Freigabe

	ST9120	ST9122	ST9124	ST9126
A	202	227	310	420
B	140	140	140	160
C	320	344	415	590
D	150	180	200	300
D1	12	15	20	30
E	90	90	120	160
F	60	60	92	130
G	40	50	75	100
H				100
J	25	30	40	80
K	25	30	40	60
L	58	80	90	120
M	90	130	140	160
N	112	115	140	160
O	85	95	120	130
P	74	110	120	144
R	143	166	188	264
S	380	480	508	710
T	28	48	48	65
U	25	21	21	29
W	26	35	35	48
Y	480-600	595-715	655-820	930-1150
Z	50	52	70	125
Ø Q	7	9	9	9
Ø Truing-up trunnion bore in the ram (V)	10H7	10H7	10H7	15H7
mounting surface	150 x 100	190 x 110	200 x 165	300 x 230
mounting surface at the ram	27 x 30	33 x 48	33 x 48	48 x 65
overhang E	90	90	120	160
compressive force (kN)	2,5	5	8 + 12	8 + 16
weight (kg)	12	20	32	79
base space	150 x 200	180 x 240	180 x 310	300 x 420
height	400	420	500	710
width of groove (I)	M8 x 10	M8 x 10	M8 x 10	M8 x 10
space requirement incl. hand lever	150 x 600	180 x 665	180 x 819	300 x 1150



	ST9120	ST9122	ST9124	ST9126
ram stroke (X1)	0-42	0-40	0-45	0-58
distance between tabel and ram	33-195	25-195	30-243	42-325
pitch range (X)	75-190	70-195	75-240	100-320
centre borehole in the tabel (J)	25	30	40	80

